

The Application Note is pertinent to the Unidrive Family

UniSoft and the Option Modules

Accessing Option Menus with UniSoft “Off-Line”

When demonstrating UniSoft it is sometimes desirable to examine the graphic block diagram for the various SOM's (Small Option Modules) however, UniSoft readily doesn't allow a SOM diagram to appear unless it is connected on-line with a Unidrive that has a particular SOM in it. Attempting to bring up an SOM block diagram will yield the message: **No Option Module Fitted**

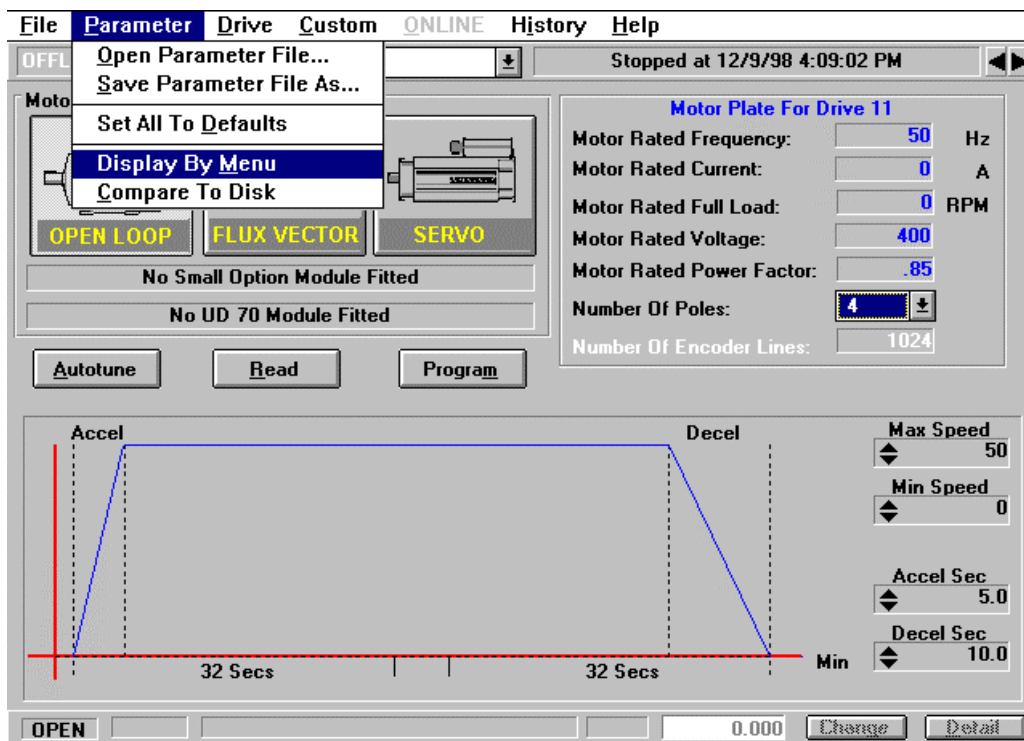


More importantly, it is desirable to be able to pre-configure a Unidrive using UniSoft while in the office and create a setup file without being connected to a drive. Your setup may be requiring a SOM but it not intuitively apparent how to achieve setting it up in the “off-line” state.

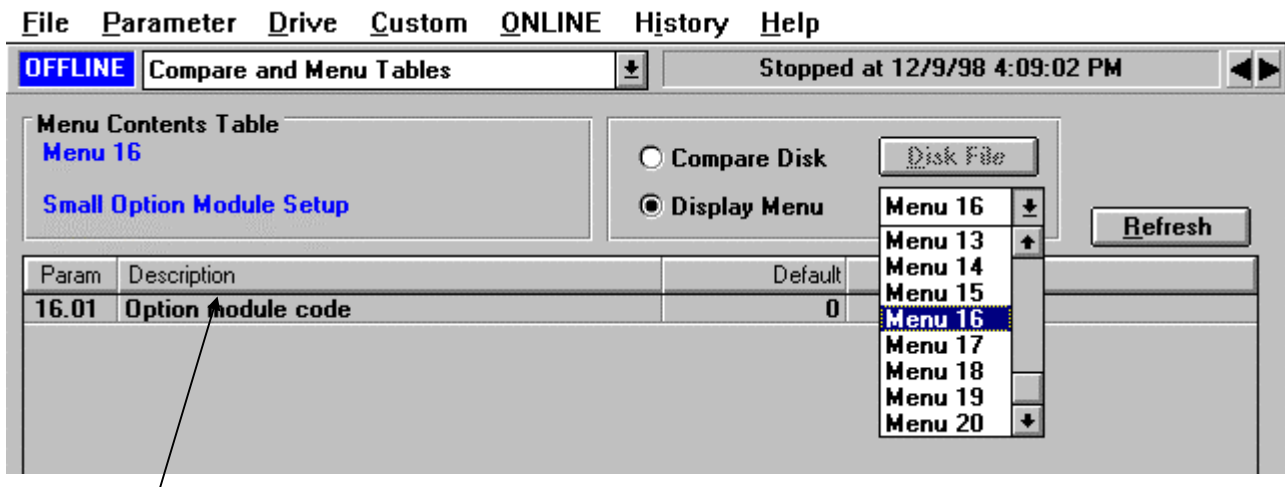
Hint:

The SOM block diagrams can be activated using the following procedure:

- 1) Go to the **PARAMETER** pull down menu and select **DISPLAY BY MENU**



- 2) Select **MENU 16** from the pull down menu and this will make the SOM code number available



- 3) If you **double-click** on the Option module code line, a description of the option module codes will appear.

Detail for Menu 16 Parameter 1

Notes
Search

MENU

16

◀

▶

PARAM

01

▲

▼

Option module code

Type: URW
Default: 0
Range: 4
Units:

Change

0

16.01

Close

Option module code

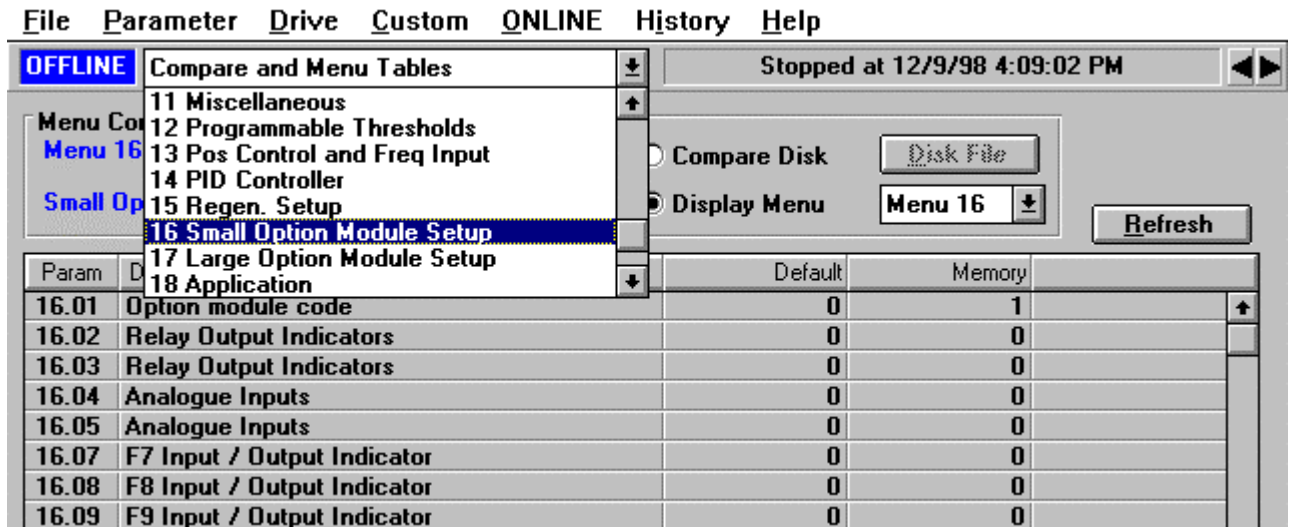
This parameter will display a code depending on which option module is fitted.

The allocated codes are:

0	No option module detected
1	Additional I/O module
2	Second Encoder interface module
3	Resolver feedback module
4	Sine-Cos encoder interface module

4) You would then change the code from 0 to 1-4 from the table above, this can be done from this description window.

5) After you've made your SOM selection, you can now go to the pull down menu and select **MENU 16** and that block diagram will now be visible and will be able to be manipulated.



Menu 20 Application Parameter Access

For similar reasons mentioned above it may be necessary to pre-configure the MENU 20 parameters for a UD70 application program. UniSoft readily doesn't allow the LOM parameters to appear unless it is connected on-line with a Unidrive that has a LOM in it. Attempting to bring up Menu 20 will yield the message:



In a similar manner as outline above, Menu 20 parameters can be made visible to be viewed and manipulated.

1) Go to **Menu 17** and **double-click** on parameter #17.01. Change the value of this parameter to 1.

2) You can now go to the pull down menu and select **MENU 20** and those parameters will now be visible and will be able to be manipulated.

File Parameter Drive Custom **ONLINE** History Help

OFFLINE Compare and Menu Tables [v] Stopped at 12/9/98 4:09:02 PM [◀▶]

Menu Contents Table
Menu 20
Application Module

☐ Compare Disk [Disk File]
☒ Display Menu [Menu 20 v] [Refresh]

Param	Description	Default	Memory	
20.00	Parameter 0	0	0	↑
20.01	UD70 Application parameter	0	0	
20.02	UD70 Application parameter	0	0	
20.03	UD70 Application parameter	0	0	
20.04	UD70 Application parameter	0	0	
20.05	UD70 Application parameter	0	0	
20.06	UD70 Application parameter	0	0	
20.07	UD70 Application parameter	0	0	
20.08	UD70 Application parameter	0	0	




SCIGATE AUTOMATION (S) PTE LTD
 No.1 Bukit Batok Street 22 #01-01 Singapore 659592
 Tel: (65) 6561 0488 Fax: (65) 6562 0588
 Email: sales@scigate.com.sg Web: www.scigate.com.sg
 Business Hours: Monday - Friday 8.30am - 6.15pm

Questions ?? Ask the Author:

Author: Ray McGranor
(716)-774-0093

e-mail : ray.mcgranor@emersondrivesolutions.com